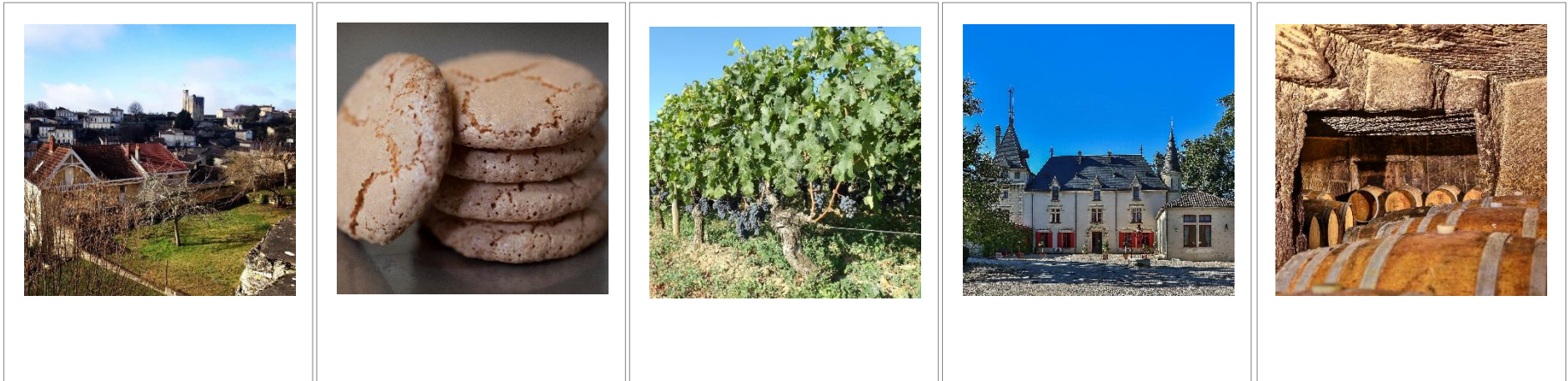


# Grand Saint-Emilionnais Tourist Office



## Helpful Guidebook

**Prepare your trip to Saint-Emilion!**



# Saint-Emilion for everyone

- This guidebook has been made to help you to prepare your stay in Saint-Emilion and enjoy our adapted offers, as a supplement to our general brochures.



- The Grand Saint-Emilionnais tourist office has been involved for many years in accessibility for everyone. Indeed, it has obtained the national « Tourisme & Handicap » certification for 4 categories of disabilities that are recognizable by these logos:



- We want to offer you the best welcome as possible. Moreover, we invite you to ask for any additional information among our staff and professional guides who will do their best to make your stay enjoyable.

- Our website is available at any time [www.saint-emilion-tourisme.com](http://www.saint-emilion-tourisme.com). Moreover, a page is dedicated to the « Tourisme & Handicap » certification in the « [Practical](#) » section. Eventually, in order to guarantee you the best possible welcome, we invite you to contact the Grand Saint-Emilionnais tourist office to prepare your stay: [accueil@saint-emilion-tourisme.com](mailto:accueil@saint-emilion-tourisme.com) - 0033 (5) 57 55 28 28.

- We welcome you all year long in our 2 tourist offices:

**Saint-Emilion:** open every day (certified “Tourisme & Handicap”)

**Sainte-Terre:** open from March to October (accessible with a wheel chair - no certification)

## PREPARE YOUR STAY

- **Documentation**



At any time, we can send you a full documentation about the Grand Saint-Emilionnais. You can also download it on our [website](#).

On demand, we will print out documents with every kind of character sizes. A brochure in Braille version is also available at the tourist office of Saint-Emilion (to be consulted on-site).



Saint-Emilion is a medieval town with sloping and cobbled streets. If you wish, you can ask for the accessibility city map and the accessible and adapted tours.

Numerous historical monuments are not accessible. We always do our best to advise you and give you the best way to discover the Grand Saint-Emilionnais.

## TO REACH SAINT-EMILION

- **Train and taxi**

The Saint-Emilion train station is situated on the line n° 26 « Bordeaux – Bergerac – Sarlat ». Please find the schedules and train traffic conditions on the official SNCF website <https://www.ter.sncf.com/aquitaine>.



The train station is situated about 1,5 kilometer away from the city center (minimum 20 to 30 minute walk). A gentle slope allows you to access the platform. Attention: to reach the village you mostly need to use the pavement.

All along the summer season, the Tuk Tour Company organizes shuttles between the village and Saint-Emilion train station (paying). Information and booking: +33(0)640836260 or [tuk.tour.events@gmail.com](mailto:tuk.tour.events@gmail.com).

It is also possible to take a train to Libourne and book a taxi from there to Saint-Emilion. We are able to send you a list by mail or e-mail on request.

- **Bus**

From June to September, the line 302 allows you to reach Saint-Emilion from Bordeaux or Libourne. On request, we can send you the schedules. You can also refer to the official Trans Gironde website and download them: [http://transgironde.gironde.fr/horaires/?rub\\_code=23](http://transgironde.gironde.fr/horaires/?rub_code=23). The Saint-Emilion bus stop is situated place Bourgeoise.

- **Parking areas**

14 spots are specially dedicated to people who own the European parking card: Place Pioceau (1 spot), Avenue de Verdun (1 spot), Rue de la Grande Fontaine (1 spot), Rue de la Porte Bouqueyre (1 spot), Rue de la Tourelle (1 spot), Rue du Marché (1 spot), Place Bouqueyre (2 spots), Place du Maréchal Leclerc (en haut de la rue Guadet, 1 spot), Rue guadet (2 spots), Espace Guadet (3 spots).

Moreover, if you have a **EU parking card**, you are able to park your car on any spot for free and as long as you wish, excluding spots named « arrêts minute » (30 minutes maximum). Please, be sure that the card is visible.

## THE TOURIST OFFICE

The Saint-Emilion tourist office is open every day except on the 25<sup>th</sup> of December and a few exceptional winter dates. The opening hours change according to the season. Opening time available on our website, « [Practical](#) » section.



- **To access the tourist office**



Once you arrive in front of the office, you can see 3 great glass doors covered by ironwork. You can use these 3 doors but it requires you to go down 4 steps.

Nevertheless, on the left side of these doors is a white door with a « Tourisme & Handicap » logo: this entrance is accessible for every people with limited mobility.

From this door you are able to reach the reception hall, a cloister and its church thanks to a lift. No code is required, simply press 0.



Parts of « information » and « ticket » desks are lowered.



A magnetic loop amplifier is available at the « information » desk.



A brochure in Braille version is also available at the Saint-Emilion tourist office (to be consulted on-site).



A voice recorder is available on demand.

## • Toilets

Free accessible public toilets are available at the « espace Villemaurine » (coach's parking lot).

Free accessible toilets for people with specific needs only are available at the Saint-Emilion tourist office. We invite you to ask the staff to get the key.



- **Sainte-Terre tourist office**

From March to October, we also welcome you in our Sainte-Terre tourist office (accessible with a wheel chair - no « Tourisme & Handicap » certification).

You will also find there a museum that is dedicated to the Dordogne river and the lamprey, to learn all the secrets of this mysterious animal. Moreover, our office and museum are situated in a charming botanic garden with a picnic area.

## VISITS

- **Guided tours**



Some of our guided tours are not accessible for some disabilities. Nevertheless, we do our best to meet your needs. We invite you to contact us (cf. phone number and e-mail address page 2).

We also organize **private tours** on request. For more information, we invite you to contact the sales department from Monday to Friday: 00 33 (0)5 57 55 28 20 or [commercial@saint-emilion-tourisme.com](mailto:commercial@saint-emilion-tourisme.com).

Moreover, every year we take part in the « Tourisme & Handicap » national days. On this occasion, we organize adapted guided tours.

Do you have a disability card? You and one accompanying person can get a reduced price for our guided tours.

- **Free accessible tours** 

On simple request at the tourist office, the staff will give you a city map for people with reduced mobility (different colours indicate different levels of difficulty). Mostly, the itineraries require someone else's assistance.

Enjoy Saint-Emilion on you own! 3 accessible circuits for people with reduced mobility are available on simple request, in advance or on the day.

- **Guide dog and helping dog**

Their presence is essential: guide and helping dogs are accepted in our 2 information offices and on our guided tours without fees.



- **Rent a wheelchair**

The Saint-Emilion pharmacy rents a wheelchair. To book it, we invite you to contact the pharmacy directly: 00 33 (0)5 57 24 70 74 from Monday to Saturday, 24 hours in advance. It is also possible, to keep the wheelchair during a whole week-end.

## SERVICES

- **Cash dispenser / ATM**



The « Crédit agricole » ATM situated at the corner of the Girondins street and the Madame Bouquey street is accessible thank to a gentle slope that also allows you to join the desk inside the bank.



Keyboards in Braille version  
English spoken



The « Caisse d'Epargne » ATM situated at the corner of the Guadet street and the Mercadieu square is available. To access the counter, press the call button easily accessible for a person in a wheelchair.



The agency has a magnetic loop.



A special service allows the access to deaf people (video-interpretation in sign language, and the speaking snapshot transcription (TIP)).

- **City hall**

The city hall is situated place Pioceau. Please, notice that it is only accessible using steps. If you are not able to climb, we invite you to call the reception: 00 33 (0)5 57 24 72 09 in advance.

- **Post office**

The post office is not available for people in wheelchairs but 2 mailboxes are available in the Girondin street and on the place Mercadiou.

The tourist office sales stamps. Moreover, you have the possibility to leave your stamped letters or postcards at the tourist office so that we will post them for you.

- **Pedestrian zone**

A large part of the town is a pedestrian zone. Moreover, the Madame Bouquey, Girondins and Clocher streets, where the tourist office is situated, are exclusively a pedestrian zone every day from 11.00 am to 6.00 pm (excluding low season week-ends).

# LIST OF OUR TOURISM & HANDICAP CERTIFIED PARTNERS

## ACCOMODATION

### Maison des Aurélines



Guest room \*\* – Wine estate  
Château des Faures, 3, Le Faure  
33570 Puisseguin-Monbadon  
05 57 40 61 07 – 06 15 66 93 14  
[chateaudesfaures@orange.fr](mailto:chateaudesfaures@orange.fr)  
[www.chateaudesfaures.com](http://www.chateaudesfaures.com)

## RESTAURANTS

### L'atelier de Candale



Gastronomic cuisine – Wine estate  
1, Grandes Plantes  
33330 Saint-Laurent-des-Combes  
05 57 24 15 45  
[atelier@mtdecoستر.com](mailto:atelier@mtdecoستر.com)  
[www.mtdecoستر.com](http://www.mtdecoستر.com)

### Le Clos Mirande



Traditional cuisine at the « Bistrot du Clos »  
Gastronomic cuisine at the « Clos Mirande »  
Mirande 33570 Montagne  
05 57 74 50 16  
[contact@leclosmirande.com](mailto:contact@leclosmirande.com)  
[www.leclosmirande.com](http://www.leclosmirande.com)

## WINE ESTATES

### Château Champion

Familial wine estate

33330 Saint-Emilion

09 61 62 43 98

[info@chateau-champion.com](mailto:info@chateau-champion.com)

[www.chateau-champion.com](http://www.chateau-champion.com)



### Château Haute-Nauve

Familial wine estate

33330 Saint-Laurent-des-Combes

06 66 31 44 42

[chateauhautenauve@hotmail.com](mailto:chateauhautenauve@hotmail.com)

[www.chateauhautenauve.fr](http://www.chateauhautenauve.fr)



### Château Beurang

Familial wine estate

Beurang 33330 Saint-Emilion

05 57 24 73 31

[contact@chateau-beurang.com](mailto:contact@chateau-beurang.com)

[www.chateau-beurang.com](http://www.chateau-beurang.com)



### Château de Bonhoste

Familial wine estate

Lieu-dit Bonhoste

33420 Saint-Jean de Blaignac

05 57 84 12 18 ou 06 71 58 90 11

[contact@chateaudebonhoste.com](mailto:contact@chateaudebonhoste.com)

[www.chateaudebonhoste.com](http://www.chateaudebonhoste.com)



### Château de Pressac

Remarkable architecture

33330 Saint-Etienne-de-Lisse

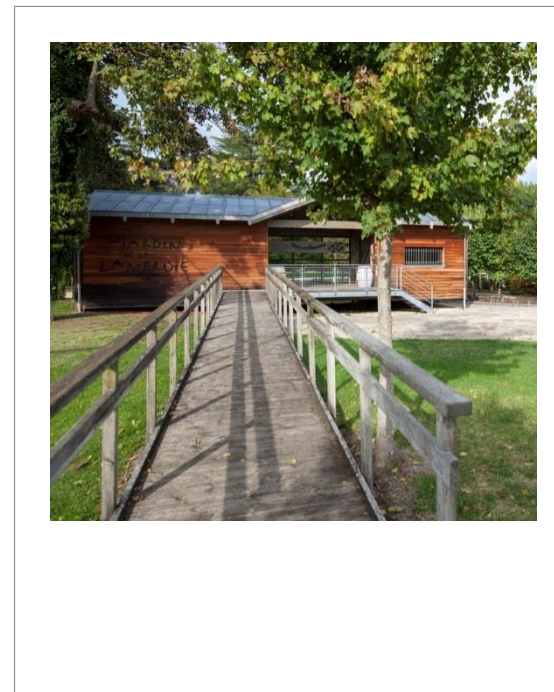
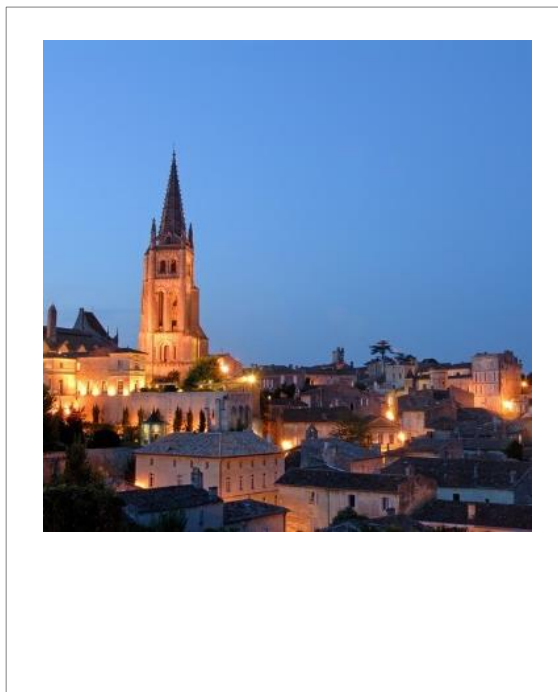
05 57 40 18 02

[visite@chateaudepressac.com](mailto:visite@chateaudepressac.com)

[www.chateaudepressac.com](http://www.chateaudepressac.com)



Thank you for your interest in Saint-Emilion and the Grand Saint-Emilionnais!  
We stay at your disposal for any comment about this leaflet.



**Office de Tourisme du Grand Saint-Emilionnais**

Place des Créneaux - 33 330 Saint-Emilion

Tel : +33 (0)5 57 55 28 28 – Fax : +33 (0)5 57 55 28 29

Courriel : [accueil@saint-emilion-tourisme.com](mailto:accueil@saint-emilion-tourisme.com)

Site web : [www.saint-emilion-tourisme.com](http://www.saint-emilion-tourisme.com)

**Bureau d'information de Sainte-Terre**

Jardin de la lamproie

Lieu-dit Lavagnac

20, rue Charles de Gaulle

33 350 Sainte-Terre

Photo credits: A. Lanta, Heurisko, G. Le Baube, C. Aussourd, S. Le Clech, office de tourisme