



# RESTAURANTS



**Time for a bite to eat? You can choose from hearty local fare to haute gastronomie, accompanied by a delicious glass of Saint-Émilion for a memorable and eminently enjoyable experience!**

## WINE BARS



### L'ABSOLLU



**TOWN OF SAINT-EMILION**

Indoor: 30 / Terrace: 12 100 m

Come and discover l'Absollu from 9.00 a.m. when you can have breakfast and enjoy tapas with a glass of wine anytime, until 11.00 p.m.  
✉ 7, place du Marché au Bois 33330 SAINT-EMILION ☎ 05 57 51 76 41

**MTWTFSS** Low-season **MTWTFSS** High-season **JFMAMJJASOND**

### L'ANTRE DEUX UERRES



**TOWN OF SAINT-EMILION**

Indoor: 35 / Terrace: 35 200 m

Located in a former wine cellar at the foot of the Tour du Roy. Terrace with an outstanding view. Selection of wines by the glass. Fine local food made with fresh ingredients: open-faced sandwiches, salads, cold meats, farmhouse cheeses, and meats served «à la plancha».  
✉ Escalette de la Grande Fontaine 33330 SAINT-ÉMILION ☎ 05 57 24 09 73  
@ j.pasfanell@free.fr

€ Menu: from 12 € / A la carte: from 14.50 € from 3.50 € from 15 €  
 **MTWTFSS** Low-season **MTWTFSS** High-season **JFMAMJJASOND**

### Ô 3 FONTAINES



**TOWN OF SAINT-EMILION**

Indoor: 25 / Terrace: 35 600 m

Wine Bar - Wine Cave. Restaurant: Iberico Bellota cold meats, Gillardeau oysters, mature cheeses, homemade smoked salmon, homemade duck foie gras.  
✉ 19, rue de la Porte Bouqueyre - 33330 SAINT-ÉMILION ☎ 09 81 85 76 04  
@ les3fontaines@free.fr www.bistrot-clemenceau.fr

€ Menu: from 25 € / A la carte: from 30 € / Children menu: 8 € from 4 € from 15 €  
 **MTWTFSS** Low-season **MTWTFSS** High-season **JFMAMJJASOND**

## THEME RESTAURANTS



### LE TROUHER CRÊPERIE BRETONNE



**TOWN OF SAINT-EMILION**

Indoor: 35 200 m

An old blacksmith workshop turned to a Breton creperie, open all year long. In winter, enjoy sweet'n'salted crepes by the fireplace. Other choices of various salads, cold meats, foie gras, cheeses, lampreys...  
✉ 49, rue Guadet - 33330 SAINT-ÉMILION ☎ 05 57 74 48 05 - 06 20 11 36 07 05 57 74 48 05  
@ le-trouher-louis-marie@wanadoo.fr

€ Menu: from 9 € / A la carte: from 15 € from 6.50 €  
 **MTWTFSS** Low-season **MTWTFSS** High-season **JFMAMJJASOND**

WINE BARS

THEME RESTAURANTS

# REGIONAL CUISINE



## AMELIA CANTA



**TOWN OF SAINT-EMILION** || Indoor: 70+30 / Terrace: 90 🏰 200 m 🍷 🦿 🐕

Traditional cuisine. Special suggestions every day. Shaded terrace in the heart of the village. Patio and three panoramic rooms. Wines from the owners' estates. Organic food, vegetarian dishes, and menus for groups and seminars.  
 2, place de l'église monolithe - 33330 SAINT-ÉMILION ☎ 05 57 74 48 03 📠 05 57 74 48 36  
 @ ameliacanta@nerim.fr 🌐 www.ameliacanta.com  
 € Menu: from 14.50 € / A la carte: from 16.50 € / Children menu: 9 € 🍷 from 3.50 € 🍷 from 16 €  
 📅 **MTWTFSS** Low-season **MTWTFSS** High-season **JFMAMJJASOND**

## AUBERGE DU VILLAGE



**SAINT-EMILION VINEYARD** || Indoor: 60 / Terrace: 30 🏰 2 km 🍷 🦿 🐕

Located in the middle of an ocean of vines. Family atmosphere and fine cuisine typical of southwest France. Many specialities worth discovering, such as two assiettes de pays (dish of regional food). Groups of up to 50 welcome.  
 2, Thillet - 33330 SAINT-CHRISTOPHE DES BARDES ☎ 05 57 74 46 39 - 06 30 06 75 15  
 @ aubergeduvillage@wanadoo.fr 🌐 www.aubergeduvillage.com GPS: N 44°53.940; W 0°07.621 // 44.899; -0.127017  
 € Menu: from 12 € / A la carte: from 15 € / Children menu: 6 € 🍷 from 5 € 🍷 from 10 €  
 📅 **MTWTFSS** Low-season **MTWTFSS** High-season **JFMAMJJASOND**

## BISTROT LE CLOCHER



**TOWN OF SAINT-EMILION** || Indoor: 50 / Terrace: 80 🏰 30 m 🦿 🍷

At the foot of the monolithic church bell tower. Terrace with panoramic view. Group meals and cocktail receptions by reservation. Traditional regional cooking.  
 3, place du Clocher - 33330 SAINT-ÉMILION ☎ 05 57 74 43 04 📠 05 57 24 65 30  
 € Children menu: 7 € 🍷 from 4.50 € 🍷 from 28 €  
 📅 **MTWTFSS** Low-season **MTWTFSS** High-season **JFMAMJJASOND**

## CHAI PASCAL



**TOWN OF SAINT-EMILION** || Indoor: 30 🏰 400 m 🦿 🐕

Located on the main street, this luminous restaurant, led by enthusiast Pascal Fauvel, combines a rich and diverse selection of wines to cheap local cuisine.  
 37, rue Guadet - 33330 SAINT-ÉMILION ☎ 05 57 24 52 45 📠 05 57 24 74 84  
 @ contact@chaispascal.fr 🌐 www.chai-pascal.com  
 € A la carte: from 19.50 € 🍷 from 3.50 € 🍷 from 14 €  
 📅 **MTWTFSS** Low-season **MTWTFSS** High-season **JFMAMJJASOND**

## L'ENVERS DU DÉCOR



**TOWN OF SAINT-EMILION** || Indoor: 90 / Terrace: 100 🏰 30 m 🍷 🦿 🐕

Specialised in wines by the glass since 1987. Awarded a Grand Prix by the wine press for «the Best Wine List in France» (in the wine bar category). Good cuisine based on fresh local ingredients. The menus and à la carte choices change every day. Excellent advice on wine and food matches. In winter: dining room with fireplace. In summer: shaded private courtyard.  
 11, rue du Clocher - 33330 SAINT-ÉMILION ☎ 05 57 74 48 31 📠 05 57 24 68 90  
 @ enversdudecor@nerim.fr 🌐 www.envers-dudecor.com  
 € Menu: from 19 € / A la carte: from 22 € 🍷 from 3 € 🍷 from 15 €  
 📅 **MTWTFSS** Low-season **MTWTFSS** High-season **JFMAMJJASOND**

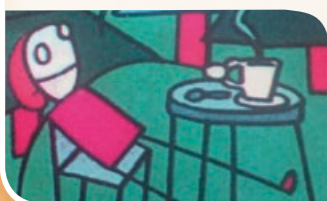
## LA COTE BRAISÉE



**TOWN OF SAINT-EMILION** || Indoor: 70 / Terrace: 10 🏰 100 m 🐕

Charming restaurant in an unusual and enjoyable setting. You will enjoy a traditional cuisine. The chef offers his foie gras cooked in apples, roast duck stuffed with foie gras, or grilled beef rib-steak.  
 3, rue du Tertre de la Tente - 33330 SAINT-ÉMILION ☎ 05 57 24 79 65 📠 05 57 74 05 51  
 @ restaurant.lacotebraisee@wanadoo.fr  
 € Menu: from 14.50 € / A la carte: from 14 € / Children menu: 12.50 € 🍷 from 4.50 € 🍷 from 18 €  
 📅 **MTWTFSS** Low-season **MTWTFSS** High-season **JFMAMJJASOND**

## LE JUST'EN FACE



**TOWN OF SAINT-EMILION** || Indoor: 20 / Terrace: 70 🏰 300 m 🍷 🦿 🐕

Unique in Saint-Émilion: a tapas bar located between the Cloître des Cordeliers and the Auberge de la Commanderie. Shaded terrace in the heart of the Château Canon vineyards. Dining room with a panoramic view of the medieval town.  
 2 ter, rue Porte Brunet 33330 SAINT-ÉMILION ☎ 05 57 24 79 82  
 € Menu: from 18 € / A la carte: from 5.50 € 🍷 from 4.50 € 🍷 from 19 €  
 📅 **MTWTFSS** Low-season **MTWTFSS** High-season **JFMAMJJASOND**

## LE MÉDIÉVAL



**TOWN OF SAINT-EMILION** || Indoor: 98 / Terrace: 60 🏰 800 m 🍷 🦿 🐕

In the lower part of town. Convivial and traditional. Homemade regional cuisine. Groups of up to 100 welcome in two dining rooms. Full menus start at 22 €. Possibility of tasting and buying wines from our cellar, Cave de la Grande Fontaine. Car park in front of the restaurant.  
 Place de la Porte Bouqueyre - 67 rue Guadet - 33330 SAINT-ÉMILION ☎ 05 57 24 72 37 📠 05 57 24 62 94  
 @ lemedieval@free.fr  
 € Menu: from 16 € / A la carte: from 9.50 € / Children menu: 11 € 🍷 from 3 € 🍷 from 15 €  
 📅 **MTWTFSS** Low-season **MTWTFSS** High-season **JFMAMJJASOND**

## LES GIRON'DINES



**TOWN OF SAINT-EMILION** || Indoor: 60 / Terrace: 45 🏰 50 m 🍷 🦿 🐕

Located on top of the town, discover a shaded summer terrace and two rooms able to welcome about 60 guests, a «bistronomique» cooking. Warm greeting, wines from our family estate.  
 5, rue des Girondins - 33330 SAINT-ÉMILION ☎ 05 57 24 77 72 📠 05 57 24 77 72  
 @ giron-dines@hotmail.fr  
 € Menu: from 19.50 € / Children menu: 11 € 🍷 from 7 € 🍷 from 16 €  
 📅 **MTWTFSS** Low-season **MTWTFSS** High-season **JFMAMJJASOND**

## LOGIS DE LA CADÈNE



**TOWN OF SAINT-EMILION** || Indoor: 35+20+12 / Terrace: 60 🏰 150 m 🍷 🦿 🐕

Family-owned restaurant established in 1848 in an 18th century building in the heart of the pedestrianised part of town. Warm welcome, regional cuisine with a personal touch. Specialised in meats cooked over vine cuttings. Private meals on request.  
 3, place du Marché au Bois - 33330 SAINT-ÉMILION ☎ 05 57 24 71 40 📠 05 57 74 42 23  
 @ logisdelacadene@wanadoo.fr 🌐 www.logisdelacadene.com  
 € Menu: from 25 € / A la carte: from 35 € / Children menu: 15 € 🍷 from 5 € 🍷 from 18 €  
 📅 **MTWTFSS** Low-season **MTWTFSS** High-season **JFMAMJJASOND**

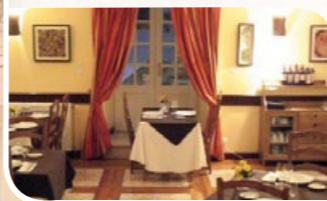
## HOSTELLERIE DU CHÂTEAU DE ROQUES



**NEARBY** || Indoor: 30 / Terrace: 20 🏰 11 km 🍷 🦿

Surrounded by vines, the restaurant is located in the vaulted rooms of the château's former kitchens. Menus feature fine local produce and regional dishes. Outdoor dining (weather permitting) in the inner courtyard. Wine list including those of the estate as well as other parts of Bordeaux.  
 Lieu-dit Roques - 33570 PUISSEGUIN ☎ 05 57 74 55 69 📠 05 57 74 58 80  
 @ contact@chateau-de-roques.com 🌐 www.chateau-de-roques.com GPS: N 44°56.801; W 0°04.221 // 44.946683; -0.07035  
 € Menu: from 24 € / A la carte: from 24.60 € / Children menu: 8.10 € 🍷 from 3.15 € 🍷 from 25.75 €  
 📅 **MTWTFSS** Low-season **MTWTFSS** High-season **JFMAMJJASOND**

## CHÂTEAU ISABEAU DE NAUJAN



**NEARBY** || Indoor: 30 / Terrace: 20 🏰 14 km 🍷 🦿

Overlooking the Dordogne Valley, this charming château dating back to the Middle Ages offers not only a warm welcome and a tour of the winery, but also traditional cooking that changes according to the season. Terrace with a panoramic view. Wedding receptions and other group meals.  
 Domaine de Naujan - 33420 SAINT-VINCENT DE PERTIGNAS ☎ 05 57 55 14 30 📠 05 57 55 14 31  
 @ isabeau@direct-chateaux.com 🌐 www.domaine-de-naujan.com GPS: N 44°47.739; W 0°06.934 // 44.79565; -0.115567  
 € Menu: from 15 € / A la carte: from 35 € / Children menu: 12 € 🍷 from 3 € 🍷 from 10 €  
 📅 **MTWTFSS** Low-season **MTWTFSS** High-season **JFMAMJJASOND**

## GASTRONOMIC RESTAURANTS



### HOSTELLERIE DE PLAISANCE

**TOWN OF SAINT-EMILION** || Indoor: 50 / Terrace: 40 🏰 20 m 🚶 🦿 🐕



Near the tourist office. A Relais & Châteaux establishment. Philippe Etchebest, a famous chef and Meilleur Ouvrier de France, works his magic in a beautiful setting worthy of his talent. A unique combination of history and gastronomy.

✉ 5, place du Clocher - 33330 SAINT-ÉMILION ☎ 05 57 55 07 55 📠 05 57 74 41 11

@ contact@hostelleriedeplaisance.com 🌐 www.hostelleriedeplaisance.com

€ Menu: from 95 € / Children menu: 28 €

📅 M T W T F S S Low-season M T W T F S S High-season J F M A M J J A S O N D

### L'HUITRIER PIE

**TOWN OF SAINT-EMILION** || Indoor: 50 / Terrace: 40 🏰 400 m 🚶 🦿 🐕



Chef David Abt offers a season cuisine with products from his local market. His companion Nathalie greets and guides you in the choice of wines. Private garden from April to September.

✉ 11, rue de la Porte Bouqueyre - 33330 SAINT-ÉMILION ☎ 05 57 24 69 71 📠 05 57 24 69 71

@ www.lhuitrier-pie.net

€ Menu: from 20 € / A la carte: from 27 € / Children menu: 10 € 🍷 from 5 € 🍷 from 18 €

📅 M T W T F S S Low-season M T W T F S S High-season J F M A M J J A S O N D

### LE CLOS DU ROY

**TOWN OF SAINT-EMILION** || Indoor: 45 / Terrace: 35 🏰 400 m 🚶 🦿 🐕



The passion of young chef Nikola, his heart generosity influence his innovating cooking. A true gastronomic address, a fresh season's carte, permanently renewed. Terrace or indoor. Prestige wine carte. Exceptional greeting.

✉ 12, rue de la Petite Fontaine - 33330 SAINT-ÉMILION ☎ 05 57 74 41 55 📠 05 57 25 43 44

@ contact@lecloduroy.fr 🌐 www.lecloduroy.fr

€ Menu: from 22 € / A la carte: from 29 € / Children menu: 18 € 🍷 from 6 € 🍷 from 17 €

📅 M T W T F S S Low-season M T W T F S S High-season J F M A M J J A S O N D

### LE TERTRE

**TOWN OF SAINT-EMILION** || Indoor: 25-30 / Terrace: 6 🏰 100 m 🚶 🐕



Located in the heart of the village. Air-conditioned. Underground cellar carved out of solid rock. Small terrace. Music. Gastronomic cuisine. Wine list with a prestigious selection. Reservations advised.

✉ 5, rue du Tertre de la Tente - 33330 SAINT-ÉMILION ☎ 05 57 74 46 33 📠 05 57 74 49 87

€ Menu: from 23 € / A la carte: from 50 € / Children menu: 16 € 🍷 from 5 € 🍷 from 16 €

📅 M T W T F S S Low-season M T W T F S S High-season J F M A M J J A S O N D

### PALAIS CARDINAL HÔTEL - RESTAURANT

**TOWN OF SAINT-EMILION** 🏰 400 m 🚶 🦿 🐕



A former 13<sup>th</sup> century abbey with a unique atmosphere. Carefully prepared cooking typical of Southwest France made only from the finest local ingredients. Air conditioned. Banquets for up to 200 people. High chairs available. Closed on Tuesday and Wednesday.

✉ Place du 11 novembre 1918 - 33330 SAINT-ÉMILION ☎ 05 57 24 72 39 📠 05 57 74 47 54

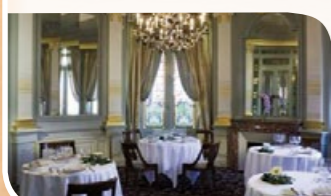
@ hotel@palais-cardinal.com 🌐 www.palais-cardinal.com

€ Menu: from 28 € / A la carte: from 28 € / Children menu: 12 € 🍷 from 6.50 € 🍷 from 16 €

📅 M T W T F S S Low-season M T W T F S S High-season J F M A M J J A S O N D

### RESTAURANT DU GRAND BARRAIL

**SAINTEMILION VINEYARD** || Indoor: 80 / Terrace: 30 🏰 3 km 🚶 🦿



Majestic dining rooms (the « Moorish Room » and the « Round Room ») in a prestigious château. Service outdoors in summer, with an unforgettable view of the surrounding grounds and vineyards.

✉ Route de Libourne - D243 - 33330 SAINT-ÉMILION ☎ 05 57 55 37 00 📠 05 57 55 37 49

@ hotelgrandbarrail@hotels-meraude.com 🌐 www.grand-barrail.com GPS: N 44°54.624 ; W 0°11.490 // 44.9104 ; -0.1915

€ Menu: from 28 € (for lunch) 🍷 from 6 € 🍷 from 30 €

📅 M T W T F S S Low-season M T W T F S S High-season J F M A M J J A S O N D

### LE VIEUX PRESBYTÈRE

**NEARBY** || Indoor: 25+50 / Terrace: 50 🏰 5 km 🚶 🦿 🐕



Located in the heart of the « satellite » Saint-Émilion region. Warm, pleasant atmosphere. Dishes made with finest seasonal ingredients. Theme evenings revolving around regional wines.

✉ 5, le bourg - Place de l'église 33570 MONTAGNE ☎ 05 57 74 65 33

@ levieuxpresbytere@orange.fr 🌐 www.restaurant-montagne-st-emilion.com GPS: 44°55.835 - 0°07.750 // 44.9303681 ; -0.12947

€ Menu: from 16 € / A la carte: from 33 € / Children menu: 9 € 🍷 from 5 € 🍷 from 19 €

📅 M T W T F S S Low-season M T W T F S S High-season J F M A M J J A S O N D

### LE CLOS MIRANDE

**NEARBY** || Indoor: 50 / Terrace: 40 🏰 6 km 🚶 🦿 🐕



Overlooking the vineyard of Montagne Saint-Émilion, a universe combining a local traditional cooking, a creative and elegant gastronomy... Terraces. Gastronomic restaurant, Bistrot, Tea Room, Gastronomic Take-Away food.

✉ Lieu-dit Mirande 33570 MONTAGNE ☎ 05 57 74 50 16 📠 05 57 74 50 16

@ contact@leclomirande.com 🌐 www.leclomirande.com GPS: N 44°56.334 ; W 0°07.409 // 44.9389 ; -0.123483

€ Menu: from 18 € / A la carte: from 33 € / Children menu: 10 € 🍷 from 4 € 🍷 from 12 €

📅 M T W T F S S Low-season M T W T F S S High-season J F M A M J J A S O N D

### AUBERGE DU PRESOIR

**NEARBY** || Indoor: 40 / Terrace: 180 🏰 17 km 🚶



At the Domaine du Pressoir \*\*\*\* less than 15 min from Saint-Émilion. Warm, attractive décor. Bordeaux specialties. Groups of up to 180 welcome. Terrace.

✉ 29, Queyrai - 33570 PETIT PALAIS ET CORNEMPS ☎ 05 57 69 85 19 📠 05 57 69 77 36

@ aubergelepressoir@yahoo.fr 🌐 www.la-poudette.com GPS: N 44°59.846 ; W 0°03.779 // 44.99705 ; -0.0632

€ Menu: from 15 € / Children menu: 9 € 🍷 from 4 € 🍷 from 13 €

📅 M T W T F S S Low-season M T W T F S S High-season J F M A M J J A S O N D

### LA POUDETTE

**NEARBY** || Indoor: 36 / Terrace: 45 🏰 17 km 🚶 🦿



You visit us like you would visit friends for a moment of gastronomy, changing according to the market. A simple, authentic and natural setting. The wonderful terrace welcomes you in the garden in summer-time. Accommodation possible.

✉ Restaurant La Poudette - D17 - 33350 PUJOLS ☎ 05 57 40 71 52

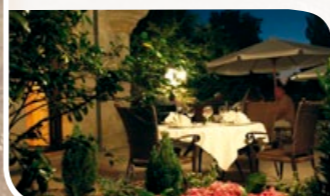
@ la-poudette@wanadoo.fr 🌐 www.la-poudette.com GPS: N 44°48.845 ; W 0°02.271 // 44.81408 ; -0.03785

€ Menu: from 29 € / A la carte: from 35 € / Children menu: 18 € 🍷 from 5 € 🍷 from 22 €

📅 M T W T F S S Low-season M T W T F S S High-season J F M A M J J A S O N D

### CHÂTEAU CAMIAC

**NEARBY** || Indoor: 30 / Terrace: 10 🏰 22 km 🦿



Enchanting, magical setting. Cooking based on seasonal ingredients. Open only for dinner and Sunday lunch. Fine wine list with an emphasis on Bordeaux. Reservations requested.

✉ Route de la forêt - D121 - 33670 CRÉON ☎ 05 56 23 20 85 📠 05 56 23 38 84

@ info@chateaucamiac.com 🌐 www.chateaucamiac.com GPS: N 44°47.255 N ; W 0°18.420 // 44.787583 ; -0.307

€ Menu: from 40 € / A la carte: from 60 € / Children menu: 18 € 🍷 from 5 € 🍷 from 24 €

📅 M T W T F S S Low-season M T W T F S S High-season J F M A M J J A S O N D

### CHÂTEAU DE SANSE

**NEARBY** || Indoor: 40 / Terrace: 30 🏰 26 km 🚶 🦿



The restaurant, with plate glass windows, has a lovely view overlooking the valley. Refined, inventive cooking in a wonderful setting.

✉ Château de Sanse - 33350 SAINTE-RADEGONDE ☎ 05 57 56 41 10 📠 05 57 56 41 29

@ contact@chateaudesanse.com 🌐 www.chateaudesanse.com GPS: N 44°47.945 ; E 0°03.360 // 44.799083 ; 0.056

€ Menu: from 25 € / A la carte: from 40 € / Children menu: 12 € 🍷 from 4 € 🍷 from 15 €

📅 J F M A M J J A S O N D